



# TRADEPOINT MARKETPLACE

BALTIMORE, MD

## PROPERTY HIGHLIGHTS

- 3,300 acre logistics and maritime development located on the Chesapeake Bay
- 7,000,000 +/- SF future development
- Multiple pad site opportunities
- Strong daytime population - 8,000 employees
- Immediate access to interstate and regional road network (I-95, I-695, I-895/Harbor Tunnel Thruway, I-295/Baltimore-26 Washington Parkway)

## DEMOGRAPHICS

1-MILE 3-MILE 5-MILE



POPULATION

1,300 28,758 78,313



DAYTIME POPULATION

8,507 7,362 25,796



HOUSEHOLDS

513 10,732 29,876



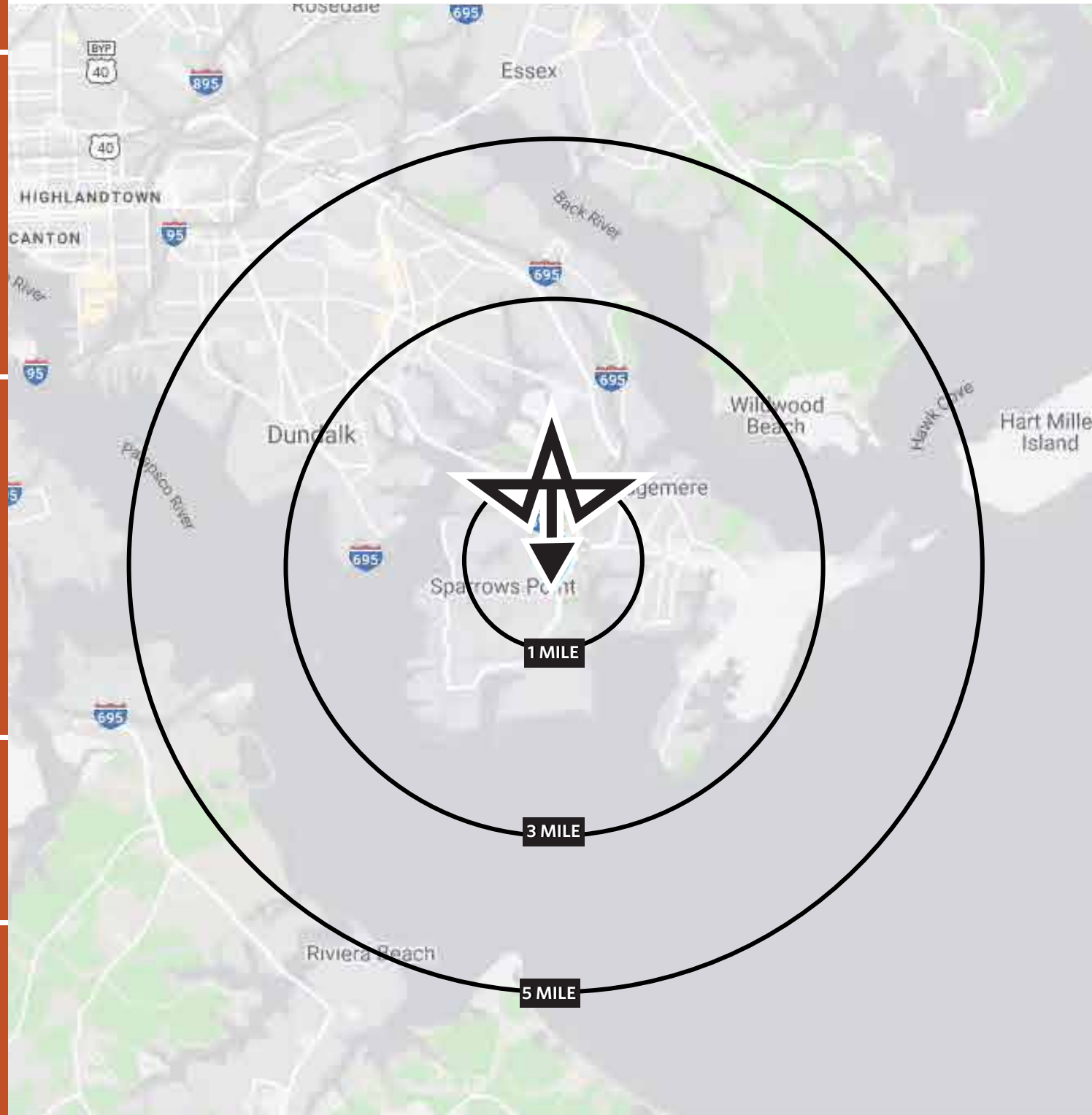
AVERAGE HH INCOME

\$94,824 \$77,054 \$74,843

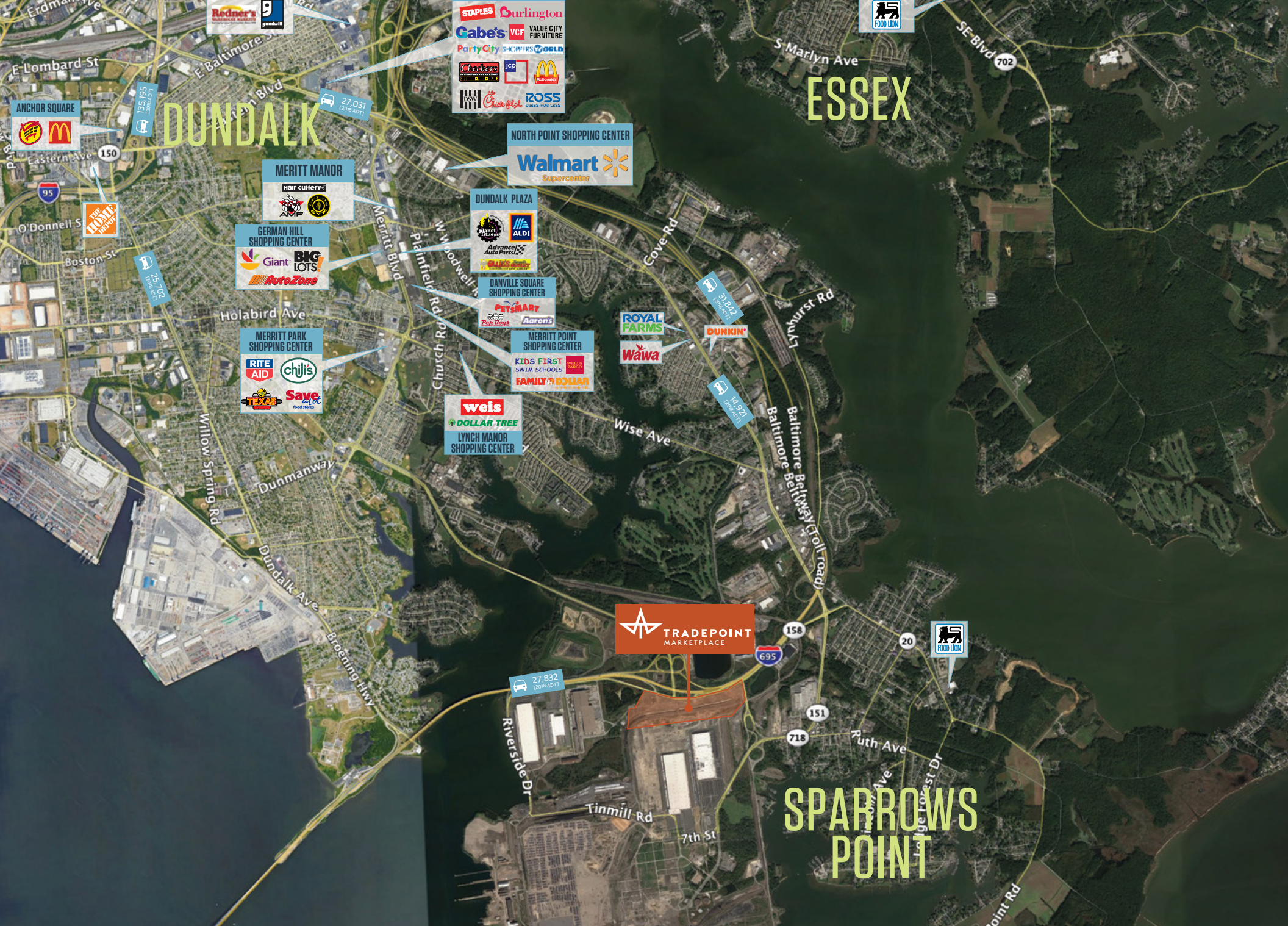
## TRAFFIC COUNTS

I-695	27,832 ADT
North Point Blvd	8,415 ADT
I-157	9,842 ADT

## JOIN



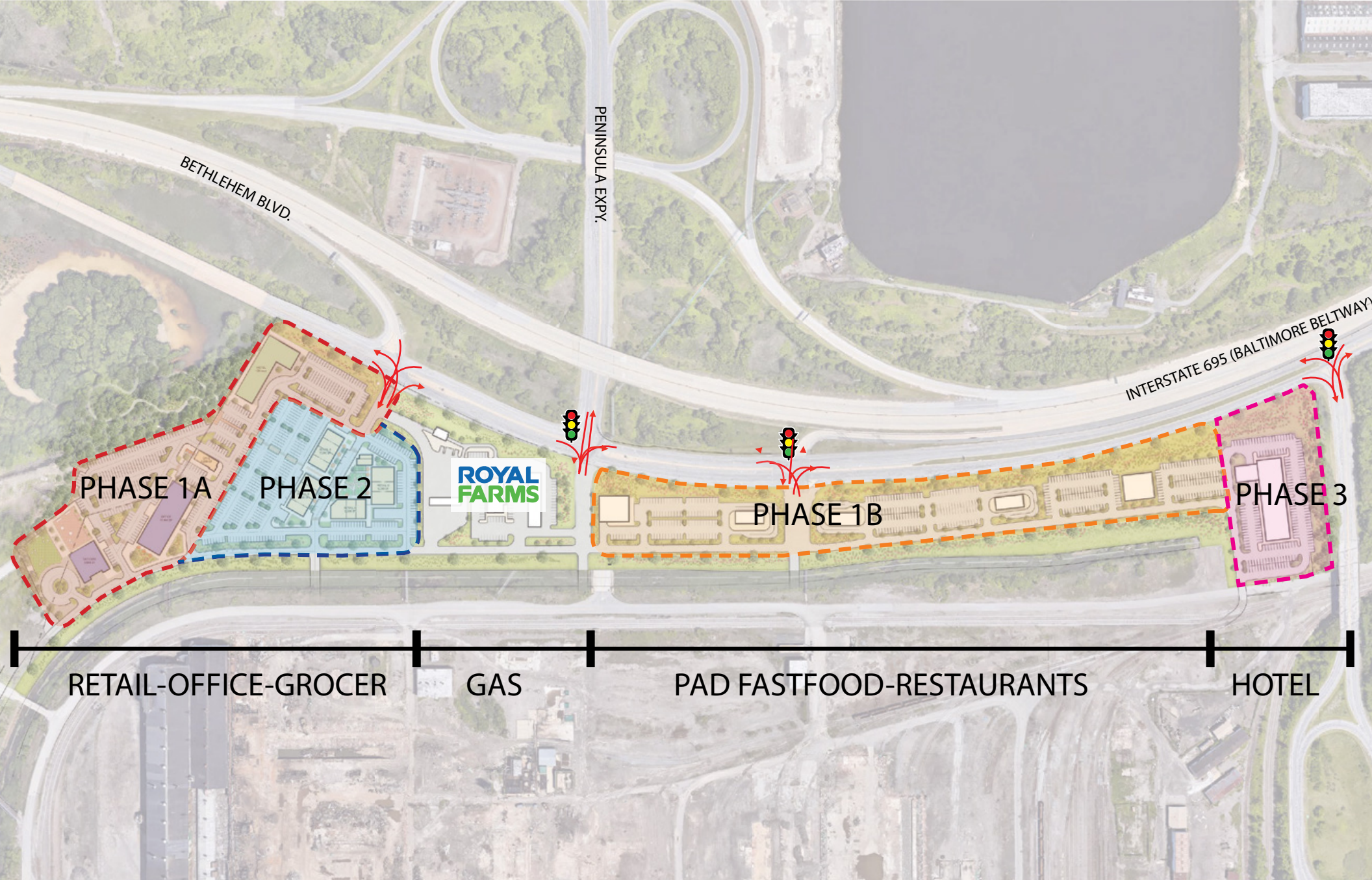












0 100'

250' 450'











ROYAL  
FARMS

BETHLEHEM BLVD

695





**ROYAL  
FARMS**

695

BETHLEHEM BLVD





**MATT COPELAND | [mcopeland@klnb.com](mailto:mcopeland@klnb.com) | 443-632-2051**  
**COOPER HENRY | [chenry@klnb.com](mailto:chenry@klnb.com) | 443-632-2085**



While we have no reason to doubt the accuracy of any of the information supplied, we cannot, and do not, guarantee its accuracy. All information should be independently verified prior to a purchase or lease of the property. We are not responsible for errors, omissions, misuse, or misinterpretation of information contained herein and make no warranty of any kind, express or implied, with respect to the property or any other matters.