



TRADEPOINT ATLANTIC IS A STATE-OF-THE-ART MULTI-MODAL CENTER AND LOGISTICS PARK FOR GLOBAL TRADE ON THE EAST COAST WITH UNMATCHED ACCESS TO LAND, RAIL, AND SEA. AN ACTIVE MULTI-COMMODITY MARINE TERMINAL WITH DEEP WATER ASSETS CENTRALLY LOCATED IN THE MID-ATLANTIC AND THE THRIVING PORT OF BALTIMORE, TRADEPOINT MARINE PROVIDES LOGISTICAL SOLUTIONS FOR A WIDE RANGE OF CARGOS.

ABOUT TRADEPOINT MARINE

- Active Member of the Port of Baltimore
- 2,200-foot East / West berth in turning basin area with 36' of water
- 1,150-foot finger pier with 41' of water
- Over 900 acres reserved for marine-associated activity
- Heavy lift pad with 3,000 PSF
- Development focused for multi-commodity capabilities
- New automotive handling capabilities and storage area managed by Pasha Auto Logistics
- Marine infrastructure improvements moving forward with over \$30 million planned
- Largest privately owned rail yard on the East Coast



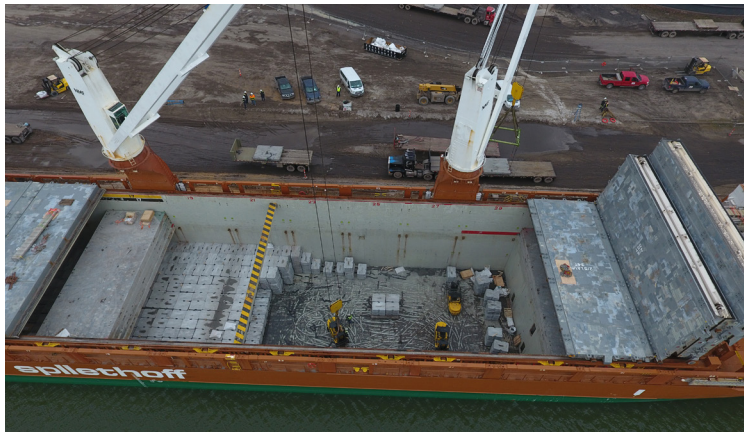
LOGISTICAL ADVANTAGES

- Planned 1 million square feet of warehouse space being developed and ample laydown space to accommodate a wide range of storage needs
- Multiple scales on the property for fast service
- Unparalleled access to interstate highways with I-695 bisecting the property with multiple access points
- Located on the Baltimore Beltway to avoid congestions associated with downtown Baltimore and Fort McHenry and Harbor Tunnels
- Easy access to both I-95 for North and South movements as well as I-70 for movements going West
- Short-line railroad with 100 miles of rail servicing the property and direct access to Class I rail lines: CSX and Norfolk Southern



SECURITY

- Fully vetted, tested and approved US Coast Guard Facility Security Plan
- Multiple layers of security with several guarded entry points
- Constant facility security patrols that can be customized to individual needs
- Non-restrictive TWIC area for easy movement of truck traffic



FOR ADDITIONAL INFORMATION, PLEASE CONTACT:

GENERAL INFORMATION AND INQUIRIES:

info@tradeportatlantic.com | +1 410 709 1286

LEASING OPPORTUNITIES AND INQUIRIES:

info@tradeportdevelopment.com | +1 443 451 2600

FOLLOW US:

tradeportatlantic.com



RAIL SERVICES AND OPPORTUNITIES:

info@tradeportrail.com | +1 410 709 1301

MARINE / CARGO OPPORTUNITIES AND INQUIRIES:

info@tradeportmarine.com | +1 410 709 1299

